

# **DISTANCE LEARNING SCHOOL START PLAN**

Here is an at-a-glance, back-to-school guide with essential information for parents and guardians.

# DISTANCE LEARNING

All students will be synchronous (live) learning with their Main Lesson and Subject teachers each day. The daily schedule will be consistent and the same daily schedule as seen with our new two-subject-per-trimester learning schedule.

## LIVE LESSONS ON ZOOM

Students in all grades, including Early Childhood, will spend class time on Zoom with their teachers each day. Teachers will guide students, live, through a daily rhythm that reflects the in-person class schedule.



## ENGAGED THROUGH GOOGLE CLASSROOM

While students will be primarily doing their work offline through hands-on, experiential learning, they will be receiving & turning in assignments on Google Classroom in an age appropriate manner.



## WHAT YOUR STUDENT NEEDS TO LEARN AT HOME

- **A dedicated device -- phone, tablet or PC -- to engage in daily synchronous Zoom classes with teachers.**
- **A reliable Internet connection.**
- **Their SGWS supplies and a dedicated quiet space.**
- **Some parent assistance and patience. Kept to a minimum as much as possible for our Grades students.**

**Please contact [rlewis@gws.org](mailto:rlewis@gws.org) if you are unable to provide any of the the above for your student.**

# DISTANCE LEARNING TRAINING & SUPPORT

One-on-One support is available though email anytime. Please email [rlewis@sgws.org](mailto:rlewis@sgws.org). If having difficulties while IN a live class, text Rocky Lewis at 330-321-3487.

## GUIDE FOR ZOOM AND GOOGLE CLASSROOM

Parents and Students can get the basics of using Zoom and Google Classroom here in our [Zoom / Google Classroom Handbook](#).



## FUTURE PLANS FOR STUDENT SUPPORT

We are working on plans for expanded support for students and families during Distance Learning. We are focused on our student's education needs and social emotional well being. We are also focused on supporting our families who find Distance Learning particularly challenging for a variety of reasons. Stay tuned and see school emails for upcoming information.

**TUTORIAL TUESDAYS**  
**5PM 8/18 & 8/25**

Join us every Tuesday at 5 PM, for lessons and Q&As about using Zoom and Google Classroom.

**Join Zoom Meeting:**

[https://us02web.zoom.us/j/87405027911?](https://us02web.zoom.us/j/87405027911?pwd=MXMvTGdraWhBT0tBT1dXbDFSOCs5UT09)  
[pwd=MXMvTGdraWhBT0tBT1dXbDFSOCs5UT09](https://us02web.zoom.us/j/87405027911?pwd=MXMvTGdraWhBT0tBT1dXbDFSOCs5UT09)

**Meeting ID: 874 0502 7911**

**Passcode: 3211**

**Dial by Phone:**  
**+1 646 876 9923**

# DISTANCE LEARNING SCHEDULES & ROUTINES

[Please Click Here for your Class  
Schedule and Links](#)

Our student's days will feel very familiar. They will have Main Lesson and Subject Lessons each day. **Their teachers will be available on screen ALL DAY.** While in live classes with teachers, students will often be instructed to do offline work while teachers stay on screen to answer questions and offer guidance. A teacher will be available for your student(s) the entire school day.



# TECHNOLOGY

## PICKUP:

Those families who requested technology support can pickup their tech items on any and all Introductory Days. There will be a table located in the drop off area on campus with your technology labeled, bundled and ready to go home.

## FORMS:

We will need all families to sign the **COPPA FORM**. Families borrowing technology will also need to sign our tech sign out waiver, available at the technology pickup table.



## TECHNOLOGY AND DISTANCE LEARNING SUPPORT

Support for technology setup and troubleshooting for Distance Learning is available via email and text.

Hardware Tech Setup and Troubleshooting:  
[sage@sagerock.com](mailto:sage@sagerock.com)

Zoom and Google Classroom Troubleshooting:  
[rlewis@sgws.org](mailto:rlewis@sgws.org) 330-321-3487

# INTRODUCTORY DAYS

Students will be coming to school, in person, for an introductory time in our open air classrooms.

## Schedule for Grades

**August 26th:**

**Class 1; 9-10a**

**Classes 2 & 7; 9-11a**

**Class 8; 9-noon**

**Aug 27th:**

**Grade 1,2,3; 9-11a**

**August 28th:**

**Grade 1,2,3; 9-11a**

**August 31st:**

**Grade 3; 9-11a**

**Grade 6, 9-11a**

**Sept 1st:**

**Grade 1; 9-11a**

**Grade 4; 9-11a**

**Grade 5; 9-11a**

## NEW SCHOOL CALENDAR



## Schedule for Early Childhood

**August 21st: Kindergarten; 9-11a**

**August 24th: Preschool & PreK; 9-11a**

## Distance Learning Begins

**8/27 for Grades 7 & 8**

**9/2 for Grades 1 - 6**



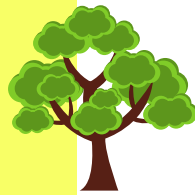
# LET'S BE OUTSIDE!

## Grades Students:

We are creating 4 open air classrooms on our 12-acre campus for introductory days and use on site when in-person learning resumes. The remaining space is for cohorting at recess time, but can also be used for outdoor learning when we are back in session.

## Early Childhood Students:

Our little ones have 4 open air classrooms outdoors ready for play time. These spaces will also be used, one for each class, for introductory days and in person learning when we are back on campus.



## PROTOCOL FOR INTRODUCTORY DAYS



Please do not bring your student to campus if they are sick. Before coming on campus, please screen your student, each day, for the following: Fever or chills, Cough, Shortness of breath, Fatigue, Muscle or body aches, Headache, Loss of taste or smell, Sore throat, Nausea or vomiting, Diarrhea.

Students are required to bring a mask to wear for meet ups and will be distanced at 6 ft apart.

# TUITION

A reasonable question pertains to whether tuition will be discounted for remote learning. It seems logical that our overall costs would be reduced during Distance Learning, but that is not the case. SGWS has fixed costs which are incurred regardless of the type of education such as salaries & benefits, insurance, basic maintenance, etc. While we do see a small reduction in costs for electricity, a percentage of heating, and so on, most of our expenses at SGWS are fixed expenses. Money saved on non fixed expenses will now go towards pandemic related expenses such as outdoor classroom set-up, upgrades to technology, additional cleaning supplies, additional staffing, and more. As we plan for and start the next school year, there are likely to be other unexpected costs that will be incurred by the school. For this reason, we are not able to offer distance learning discounts as there has not been an overall reduction in the costs associated with offering our education.

